



Process Verified Program

Quality Manual for Samson Verified Natural Suppliers

MDCL 260522

2204 14th Street
Columbus, NE 68601

Contact:

Scott Mueller
Rachel McNutt

Phone: (402) 606-4096
Email: contact@samson-inc.com
Website: www.samson-inc.com

Contents & Master Document Control List (Effective Date: 240911)

Samson, LLC QMS Program.....	4
1. Quality Management System	4
1.2 Documentation Requirements	4
Quality Manual Scope	4
2. Management Responsibilities	6
3. Product Realization	6
3.2.1 Identification and Traceability	11
3.3.1 Preservation of Product	13
3.4 Control of Monitoring and Measuring Devices	13
4. Control of Non-Conforming Product within the QMS	14
Back-Verification of Feedlot Cattle for Source and Age Verification (MDCL 080630)	17
Sample Birth Record Form (MDCL 060601)	19
Samson PVP Ear Tags (MDCL 240111).....	20
Disqualification Procedure (MDCL 080104).....	21
Non-Hormone Treated Cattle.....	21
Samson Verified Natural Cattle	21
Sample Receiving Manifest (MDCL 070601)	23
Samson PVP Shipper's Procedure and Checklist (MDCL 080630).....	24
3-7 days prior to shipment	24
At shipment:	24
After shipment:	24
Sample Producer Shipping Affidavit (MDCL 240911)	25
Samson PVP Shipping Manifest – Affidavit #0001 sample (MDCL 080104)	26
SPECIAL INSTRUCTIONS TO DRIVER (MDCL 080630)	27
Zero Tolerance Policy (MDCL 150725).....	28
Clean-out procedures for Feeding Equipment (MDCL 150725)	29
Continuous Improvement Record (MDCL 060810).....	30
Truck Cleaning Affidavit for Feed Deliveries (MDCL 080728).....	32
Inventory Control Procedure (MDCL 070601)	33
Back Verification Procedure: Age and Source Only (MDCL 080315)	34
Cattle Treatment & Vet Charges (MDCL 060810)	35

Sample Feed Record MDCL 060601	36
Cattle Receiving Procedure MDCL 070301	37
Program Compliant Tag- Samson, LLC Tag Receiving Procedure (MDCL 070601) ..	38
Program Compliant Tag- Supplier Receiving Procedure (MDCL 070301)	39
Feed Receiving Procedure (MDCL 070301)	40
Controlled Drugs Receiving Procedure (MDCL 070301).....	41
Samson Verified Natural Criteria (MDCL 230623)	42
Tyson Approved Direct-Fed Microbial List (MDCL 180731)	43
Verification of Non-Samson Approved Cattle for Program Compliance (MDCL 150724)	46
Approved Feed & Feed Ingredient List (Computer Generated)	47
Approved Drug Listing (Computer Generated)	47

Samson, LLC QMS Program

Samson, LLC's objective is to establish a quality management system that documents, implements and maintains a system that assures conformation to the requirements outlined in this program procedure and specified product requirements to feedyards and packers.

1. Quality Management System

1.2 Documentation Requirements

1.2.1 General

Samson, LLC has prepared and maintains a QMS that includes

- Documented statements of a quality policy;
- Documented statements of a quality objective;
- A quality manual;
- Documented procedures required by this Procedure;
- Documents necessary to ensure the effective planning, operation, and control of its processes; and
- Records required by this Procedure.

1.2.2 Quality Manual

The Samson LLC quality manual includes:

- A document listing all personnel assigned to managerial positions within the program;
 - See section 3.2
- A description of the scope of the QMS;
- The specified process verified points;
 - See section 4.2
- Documented procedures established for the QMS;
- Reference to all forms, tags, and labels used to track or demonstrate product conformance;
- A master document list that shows the most current issue of all QMS procedures, forms, tags, and labels used to track or demonstrate conformance;
- A description of the interaction between the processes of the QMS; and
- All other documentation as required in this Procedure.

Quality Manual Scope

The scope of this Process Verified Program is for Samson, LLC to serve as a cattle management organization to support and develop an umbrella network of dairies, ranches, feedlots, auction markets and member organizations to supply verified cattle to feedlots, calf ranches and packing plants destined for export or value-

added markets that require verification (including but not limited to QAD 1040 Livestock Feeding Claims, QAD 1030Z Procedure and QAD 1013 Procedure). In the event a member organization wishes to display its logo on control documents, it must be done in a manner that recognizes Samson LLC as the operating PVP and the document must be placed in the MDCL for reference.

The four graduated levels of verification will provide customers live beef cattle that are product designated for source, age, non-hormone treated and / or Samson Verified Natural. Separate verification points to supplement the base levels include High Quality Beef (EU HQB, Direct Fed Microbials and Never Fed Beta Agonists), Beef Quality Assurance, Vet Quality Assurance, VQA+, Breed Verification, Born and Raised location (State and Country), Non-GMO Verified, Domestic Hormone Free Cattle (DHFC), Lifetime Grass Fed Cattle (LGFC), and Non-deforestation. Suppliers will be evaluated for specific identification, receiving, handling and shipping procedures annually and trained to assure conformance to this PVP. Additionally, internal audits will be conducted to analyze the operations and administration of this PVP to develop continuous improvement targets for internal and external customers. Systems will also be audited by Samson, LLC at identified control points to assure conformance of our product.

1.2.3 Control of Documents

- The most current approved revision of these documents will be maintained in the Samson office
- All supplier relevant revised documents will be delivered to the supplier through electronic transmission or through mail service if electronic transmission is not possible
- Verification of the use of the revised documents will occur during document usage and at re-evaluation
- All earlier versions or unapproved documents will be considered obsolete and void for the purposes of this program
- All approved suppliers will have access to the latest documents through Samson's website
- The Supplier Operating Quality Manuals will be available through the Samson web site to all participating feedyards and ranches that have Samson PVP identified cattle on their premises. If the supplier does not have access to the website, a copy of all current documents and relevant sections must be maintained on their premise
 - Age verified only ranches are only required to maintain their profile, evaluation and training record / checklist on-site.
- Revision numbers will be listed on the documents and can be cross-referenced with the Control Documents on the Samson website
- All past documents will be maintained for at least one year
- Any substantive changes must be submitted to the AS Branch for approval prior to implementation

1.2.4 Control of Records

- Original records will be maintained at the source of origin which includes the Samson, LLC office or supplier’s office
- Backup of tag data records will be maintained off-site and updated weekly to prevent loss or damage
- Only management shall have complete access to the records. Suppliers may be granted security clearance only for the records they are responsible for maintaining. Once the product is transferred from the supplier, that access will be removed.
- Tag data records will be computer based, other records in hard copy or computer based and available for auditing
- All records needed to support the claims desired (including but not limited to birth, feed, drug, breed records) will be retained for at least 3 years

2. Management Responsibilities

The Operational Manger for _____, a Samson

Verified Natural approved supplier to the Samson Process Verified Program is

_____.

Other key employees who have supervisory responsibilities include:

Employee

Position

3. Product Realization

3.0 Animal Care

3.01 Feeds / Feeding (Livestock Feeding Claims, DHFC, NHTC, LGFC, Non-GMO Verified, Samson Verified Natural Verification only)

- Feed listings
 - Must be maintained at the supplier's office
 - Current (within the last year) sources of feeds must be identified
 - Feed analysis tags for commercial feeds must be recorded
 - Feeds that are verified non-GMO through testing, certification or grown from non-GMO seeds
 - Letter from feed supplier acknowledging program conformance
 - Supplier feed listings shall be kept current
 - Back-up feed listings in the Samson, LLC office shall be updated during re-evaluation
 - Purchase invoices shall be available for review
 - Approved feed ingredients will be listed on the Samson website and the MDCL
 - Additional feeds or ingredients may be added to the list by contacting the Samson office
 - Auction Markets approved for NHTC/Samson Verified Natural are not allowed to inventory controlled feed ingredients
- Feeding
 - Yearly feed records that identify types of feed (or feed ration), quantity, dates and the group fed
 - Lot records showing controlled feeds fed and amounts fed shall be recorded
 - For the Livestock Feeding Claims
 - Current and past feed rations, commercial feed purchases with feed ingredient tags and daily feed records shall be kept on file with the last 100 days submitted to the Samson office prior to shipping – see MDCL for appropriate forms
- Feeding Equipment
 - Option 1 – Must provide a dedicated feeding system for program cattle that prohibits the cross-contamination of non-approved feeds, i.e.
 - Separate feed wagons
 - Separate mill
 - Option 2 – Must implement clean-out procedures between delivery or mixing of non-approved feeds prior to feeding program cattle
 - Example clean-out procedures (MDCL)

3.02 Drugs and Treatments (DHFC, NHTC, Samson Verified Natural Verification only)

- Drug listing
 - Must be maintained in the supplier's office
 - Includes all drugs present and their sources
 - Purchase invoices shall be available for review

- Inventory records shall be maintained for controlled drugs and hormones (See Inventory Control Procedure, MDCL)
 - Starting Inventory
 - Purchases or acquisitions
 - Use or disposal
 - Current Inventory
- Reference letter from consulting Veterinarian stating knowledge of program requirements and ability of supplier to perform.
 - Auction Market Veterinarians are solely responsible for controlling and inventorying all controlled drugs
 - Should the Veterinarian administer controlled drugs, it will be their responsibility to either remove the PCT or notify Samson of its treatment and resulting downgrade in program eligibility
 - Auction Market Veterinarians will be required to undergo supplier training to assure understanding of program and identification requirements
- Treatments
 - All cattle that receive non-approved drugs on the premise shall be identified and documented appropriately
 - Samson Verified Natural cattle will receive a secondary tag (or retagged with a green NHTC tag) and will be eligible for only the NHTC, age and source program levels
 - Cattle receiving HGPs will receive a secondary tag (or retagged with a yellow age tag) and will be eligible for only the age and source program levels
 - If mass processing or treatment occurs, then the Samson office can be notified of the cattle group so the Samson office can alter the program eligibility without requiring additional tagging.
 - Treatment records shall include:
 - Calf ID (including Samson PCT)
 - Lot number, if applicable
 - Treatment date
 - Drugs used
 - Amount used
 - Approved drugs will be listed on the Samson web site and the MDCL
 - Additional drugs may be added to the list by contacting the Samson office
 - DHFC must comply MDCL “Criteria for Domestic Hormone Free Cattle (DHFC)”

3.03 Beef Quality Assurance

- Current Beef Quality Assurance Certificate of Approval on file with NCBA or State BQA office

- Two Levels
 - Certified
 - Certificate on file documenting the supplier passed a training process
 - Verified
 - Certificate on file documenting an on-site assessment was conducted

3.04 Vet Quality Assurance

- Meets Age verification requirements
- Has a current Beef Quality Assurance certificate on file
- Certificate signed by consulting Veterinarian documenting
 - PCT range receiving vaccine protocol
 - Vaccines administered
 - 4 way modified live
 - IBR
 - BVD
 - BRSV
 - PI3
 - 7 way Colstridia
 - Pasturella
 - Dewormer
 - Date vaccines are administered
 - Vaccines administered no later than 15 days prior to shipping and no earlier than 60 days prior to weaning.
 - VQA+
 - Organic Mineral Record signed and submitted by ranch documenting the four organic minerals, mineral tag, purchase invoice(s) and number of pairs in the group
 - Organic Minerals are defined as metal ions that are attached to an amino acid molecule. The minimum required minerals are zinc, manganese, copper and cobalt

3.05 Breed Verification

- The approved product must be from either a sire or dam that is registered or certified by a breed association, or
- The approved product was genetically verified by a genomics laboratory from the Council on Dairy Cattle Breeding approved listing (MDCL).
- The minimum verified breed percentage shall be determined by the Breed Association, Genomics Testing Company or harvesting facility.
 - Braunvieh Association of America
 - The minimum verification level for the Braunvieh Association of America is 25% Braunvieh breed
 - American Wagyu Association

- The minimum verification level for the American Wagyu Association is defined by the “Rules of the American Wagyu Association”. MDCL 150924
- Angus Plus
 - Meets or exceeds the standards for the Genotype Certification. MDCL 240911

3.06 Dairy Calf Ranch

- Definition – An operation that receives dairy calves from dairy farms to increase weight and maturity before being placed into a feedyard
- Initial on-site evaluation is required, regardless of claim
- Annual on-site evaluations are required, regardless of claim
- Approved suppliers must follow the attached procedure as listed in the MDCL

3.07 Non-GMO Cattle

- Definition – A product or ingredient that does not contain genetically modified organisms (GMOs) as defined by local regulatory authorities or international standards
- All feed must be derived from non-GMO sources
- Cattle must be born from non-GMO parentage and, if applicable, recipients

3.08 Non-Deforestation Claim

- Definition - The recognition of a supplier that has refrained from deforestation activities.
- No deforestation activities have occurred unless mitigation activities have been implemented.

3.1 Receiving

3.1.1 Receiving Procedures

- Supplier evaluation and approval will be addressed in the attachments
 - Ranch Supplier Selection Procedure (MDCL)
 - Feedlot Supplier Selection Procedure (MDCL)
 - Auction Market Supplier Selection Procedure (MDCL)
- Cattle received must follow the protocols set up in the attachment –
 - Receiving Inspection Procedure and Checklist (MDCL)
 - Receiving manifests are filed in the receiver’s records and a copy returned to the shipper for cross-verification (MDCL)
 - Samson suppliers must submit all shipping documentation and program tag numbers from cattle received from other 3rd party providers. The Samson office will review the paperwork and independently verify claims against the 3rd party web-site or

representative prior to acceptance. Samson supplier is then notified of the outcome.

- Program Compliant Tags and information received shall follow the receiving process as outlined in the PCT Traceability Flow Chart (MDCL)
 - Letters from the Tag Manufacturer and Samson, LLC will be maintained to guarantee uniqueness and non-duplication of PCTs. (MDCL)
- Feeds received by Suppliers (DHFC, NHTC, Samson Verified Natural, LGFC, Non-GMO Cattle and Livestock Feeding Claims verification only) shall follow the “Feeds Received Flow Chart” (MDCL)
 - To guarantee conformance one of the following must be provided
 - A letter from the supplier’s feed manufacturer acknowledging program requirements and conformance of product
 - Periodic testing of feeds (10% of loads) to demonstrate manufacturing conformances
 - To guarantee Non-GMO conformance, one of the following must be provided
 - A letter from the supplier’s feed / grain source that the feed is free from GMO contamination above the acceptable levels
 - Testing of each shipment to demonstrate conformance
 - A document attesting to the chain of custody beginning with the seed
 - Feed Certification from an approved non-GMO organization
- Controlled Drugs received by Suppliers (DHFC, NHTC and Samson Verified Natural verification only) shall follow the “Controlled Drugs Received Flow Chart” (MDCL)
 - A letter will be maintained on file from the consulting veterinarian that provides assurance of supplier’s capacity to perform

3.2.1 Identification and Traceability

Samson, LLC Procedure to identify and trace the product

- A unique 15 digit visual color coded tag with an optional corresponding EID tag (MDCL) or an EID tag with an optional standard Samson Lot Tag
 - Blue tag – source verification only
 - Yellow tag – source and age verification
 - Green tag – Non-hormone treated verification
 - Pink tag – Samson Verified Natural verification
 - Orange tag – Vaccination protocol verification in combination with at minimum source and age verification
 - Other colors – As designed in conjunction with the breed association and noted on the PCT

- Guarantee from Tag manufacturer that the tags will not be replicated (see MDCL)
- Cattle data and transfers entered into the Cattle Tracking System (CTS)
- Batch ID's, which may designate a pen or lot number, will be used for identifying groups of PCT animals fed together which desire a High Quality Livestock Feeding Claim (HQLFC)
- Replacement of Lost Ear tags
 - If ranch tag or secondary ID is intact
 - Cross-reference the ranch ID to the original PCT and apply new PCT noting the original number and notify Samson
 - If no secondary individual ID but the calf has a ranch brand,
 - Re-tag with a new PCT noting the original number at the time of next handling and notify Samson (Source, Age and/or DHFC only)
 - If no secondary ID but the calf remains in a controlled, segregated pen
 - Re-tag at the time of next handling when the missing PCT (unless found in pen) can be identified. Replace missing tag with new PCT noting the original number and notify Samson (Source, Age and/or DHFC only)
 - If no secondary ID and the calf is not in a controlled, segregated pen
 - Segregate the calf and document final disposition
- Shipping procedures
 - If applying for the HQLFC
 - 3 days prior to shipment submit to Samson, LLC
 - Rations fed to the group(s) of cattle
 - Feed consumption records for at least the last 100 days (more may be required upon review by Samson, LLC)
 - Cattle are sorted or brought into shipping pens
 - Cattle are visually inspected for PCT and head count
 - Shipping manifests are prepared by Samson, LLC,
 - providing all potential PCT numbers to be shipped
 - PCTs are recorded for all cattle shipped during a set time frame not to exceed 3 days (Not to exceed 1 day for cattle moving to harvest)
 - If the shipper provides all possible program cattle but only ships a group of those cattle, then the receiver must record the cattle received and return the information back to the shipper for documentation for final transfer to the receiver of the cattle

- Should the receiver of Samson program cattle not read the PCTs, then all the cattle will remain in the shipper's inventory for future shipments.
 - Auction Market suppliers shipping NHTC/Samson Verified Natural cattle must read all Program Compliant Tags prior to shipping from the auction market and provide Samson, LLC with their destination for shipping documentation. (MDCL Auction Market Shipping Procedure)
 - The receiver of these NHTC/Samson Verified Natural cattle is still required to re-read the PCTs for reconciliation.
 - designating all claims the animals on the manifest are approved for at shipment
- Shipping affidavits are signed with the originals remaining with the shipper
- Trucking checklists are signed with the originals remaining with the shipper
- Copies of all shipping affidavits and trucking affidavits shall be sent with each truck. Manifests may be sent with the truck or electronically transmitted ahead of the trucks.
- Receiving procedures
 - As described in section 4.5.1
- Tag inventories must be maintained with date of movements and final disposition
- Complete listings of Ranch Suppliers and Feedlot Suppliers with their approved level of program participation will be maintained in the Samson office
- Back-verification of Source and Age cattle at the feedlot (see BV Procedure, MDCL)
 - Conduct ranch and feedlot supplier profiles and evaluations, if not already performed
 - Fill out back-verification assessment form (MDCL)
 - Submit to the assigned staff for approval

3.3.1 Preservation of Product

- Document movement of product through shipping and receiving affidavits
- Affidavits and master controls shall be kept at the Samson office
- Back-up systems are maintained off-site

3.4 Control of Monitoring and Measuring Devices

- Monitoring Devices
 - A tamper evident, 15-digit visual tag with an optional corresponding EID tag combination or an EID tag with an optional standard Samson Lot Tag

- Tags are ordered, inventoried and assigned to approved suppliers by Samson management
- Official tag inventory shall be maintained at the Samson office
- Samson VQA PCT's will be shipped to the Vet Clinics for distribution and inventorying. Samson will keep a record of PCT's shipped to the Clinics
- Unused inventory shipped to the supplier must be inventoried at the supplier's location or sent back to Samson, LLC
- Samson PCTs must be applied in accordance with the program requirements
- Shipping / Receiving Manifests to track movement of tags
- Random visual spot checks to verify traceability of tags
- Approved birth records (MDCL)
- Transportation records (MDCL)
- Inventory Control Record

4. Control of Non-Conforming Product within the QMS

Samson, LLC ensures that non-conforming product is identified and controlled to prevent its unintended use or delivery.

Non-Conforming Product Procedure

- Definition of non-conforming product
 - Live Cattle
 - Product missing PCT number without the ability to cross reference back to the number
 - Product that is misrepresented in its program requirements
 - Product that does not have verifying documentation of age or source
 - DHFC, Non-GMO, NHTC or Samson Verified Natural cattle that have left the control of the supplier
 - DHFC, NHTC approved cattle that have been exposed to HGPs (refer to Disqualification procedure)
 - Samson Verified Natural approved cattle that have been exposed to controlled drugs (refer to Disqualification procedure)
 - BQA Cattle that have not been handled properly
 - VQA protocols that have not been followed
 - Breed that was validated but was from a non-validated origin
 - Cattle that have been raised in a Non-deforestation approved operation that conducted deforestation activities
 - Program Compliant Tags
 - PCTs with duplicate numbers
 - PCTs with illegible numbers
 - PCTs that are not authorized by a USDA approved PVP

- Feeds
 - A feed that is used for DHFC, NHTC or Samson Verified Natural cattle that contains hormones or controlled drugs respectively.
 - A feed that is used for DHFC, NHTC, Samson Verified Natural, LGFC, non-GMO cattle which contains ingredients that cannot be documented or that are not approved
- High Quality Livestock Feeding Claim
 - Suppliers requesting the High Quality Feeding Claim for their animals that do not meet the following attributes:
 - Quota A: Cattle and/or bison must have been fed for 100 days or more on a nutritionally balanced, high energy feed concentration ration containing no less than 70% grain, and at least 20 pounds feed per day per head. NOTE 1: Grain is defined within the *Grain Feed Diet Clarification* document. NOTE 2: The 100 days does not have to be consecutive.
 - Quota B: Cattle must have been fed the last 100 days on a diet containing not less than 62% of concentrates and/or feed grain co-products on a dietary dry matter basis that meet or exceed a metabolisable energy content greater than 12.26 mega joules per one kilogram of dry matter (*12.26 MJ/kg = 60.318 NEg per 100 lbs*). The heifers and steers that are fed the diet described above shall be fed, on average, no less than 1.4% of live body weight per day on a dry matter basis.
 - Never Fed Beta Agonists: Verifies that animals have never received beta agonists at the location(s) where they reside during the finishing period of their life.
 - Direct Fed Microbials: Cattle must be fed an approved DFM for the last 100 days on feed.
- Drugs
 - A drug that is used for DHFC, NHTC or Samson Verified Natural cattle which contains ingredients that cannot be documented
- Product that is non-conforming
 - Must present supporting documentation to comply with conformation and receive acceptance from Samson, LLC
 - Any approved supplier in possession of a non-conforming product is responsible for the segregation and removal of the product
 - Live Cattle
 - Must be segregated from conforming animals prior to shipment, and
 - Identified and segregated through final disposition (Corrective Action Record)

- Should an animal be identified as non-conforming after delivery then the animal will either be returned to the source or marketed in an acceptable manner to the buyer that does not compromise the QMS programs.
- DHFC, NHTC, Non-GMO, LGFC and Samson Verified Natural Verification will be disqualified if:
 - Calves that are separated and out of control from the ranch or feedlot
 - It is discovered that the calf may have been exposed to feed or feed supplements containing controlled substances
 - Any calf that loses a controlled PCT where positive Samson identification cannot be assured (DHFC, Non-GMO and LGFC only requires identification to the Samson Group)
- Should a DHFC, NHTC or Samson Verified Natural calf receive a controlled drug, the calf may be retagged with the appropriate program tag or receive a secondary tag designating the non-conformance
 - A record documenting the PCT number and the treatment / feed administered shall also be maintained
 - If mass processing or treatment occurs, then the Samson office can be notified of the cattle group so the Samson office can alter the program eligibility without requiring additional tagging.
- Program Compliant Tags, Feeds or Drugs
 - Document the non-conforming product
 - Record the receipt, segregation and removal of product from the program



Back-Verification of Feedlot Cattle for
Source and Age Verification (MDCL 080630)

Date: _____

Ranch of Origin: _____ Date of Shipment: _____

Ranch Contact: _____ Phone: _____

Current Feedlot Location: _____ Date Received: _____

Feedlot Contact: _____ Phone: _____

Number of Cattle Received from the Ranch: _____ steers _____ heifers

Submit one of the following with this document:

Transportation Record

Health Certificate

Purchase Invoice

Other _____

For future reference:

Pen #: _____ Lot #: _____

Traceability of Identification (check all that apply)

Ranch tag was not removed from the cattle

Lot tag was applied upon arrival and cross-referenced to the ranch of origin

Cattle have remained segregated from other sources of cattle

Cattle were received directly from the ranch of origin

Cattle were branded at the ranch of origin Brand: _____ Location: _____

Cattle were previously approved by another USDA PVP/QSA Program

Name of Provider: _____

Cattle were commingled but can be identified by source

Describe how the cattle are distinguishable:

I attest that _____ has maintained the identity of the cattle

Feedyard Name

and have removed any cattle that may have questionable origin.

Submitted by: _____
Feedyard Representative

Date: _____

Approved by: _____
Samson, LLC

Date: _____

Sample Transportation Document (MDCL 060601)

BILL OF LADING DATE 7/2/05

Tim Bollinger Trucking HCR 64, Box 176
Timber Lake, SD 57656 Paid
Phone (605) 865-3586 or (605) 865-3272 Chg.

Received, subject to the classifications and tariffs in effect on the date of issue of this form:

In good condition, unless otherwise noted below, the commodities described herein, which the motor carrier agrees to transport and deliver to the designated consignee, in like condition, at destination designated below:

From Mobridge Livestock Shipper
Address Mobridge, S.D. Buyer Larry Gill
License _____ Truck No. _____

Consigned to Samson Feedlot
Destination Platte Center, Neb

Quantity	Description	Rate	Total
86	calves 426 miles	3.00 a mile	\$1278.00

NO 4070 Paid 10/10/05
#3466

Signature of Owner - Agent Thank You Signature of Driver John Schumaker

I certify under penalty of perjury that as of the date of this Bill of Lading this trucking company holds intrastate motor carrier authority from the SDPUC to transport the commodities listed hereon and that this trucking company also holds the necessary insurance, which is filed with the commission to transport the same.

Recommended key components:

- Date
- Origination
- Destination
- Trucking Firm
- Driver's Signature
- Number of head

Samson PVP Ear Tags (MDCL 240111)

The ear tags shown below are the official means of animal identification for all Samson PVP cattle. The tags are designed for single use and inventoried, then destroyed when removed from the animal. The tag numbers are permanently and mechanically applied to the tag by the manufacturer. Temple Tags has agreed in writing to provide tags identified with the word Samson. The numbering sequence is also controlled by Samson, LLC. Numbers will not be repeated for a period of at least 3 years.



- Blue Samson PCT - Source Verified
- Yellow Samson PCT - Age Verified
- Green Samson PCT - Non-hormone Treated Verified
- Pink Samson PCT - Samson Verified Natural
- Chartreuse PCT – Braunvieh Verified
- Orange PCT (not pictured) – VQA
- Purple PCT (not pictured) – Angus Plus

EID tags may be used in conjunction with the above tags or as a unique tag for the Source, Age, NHTC, Samson Verified Natural or Genetic Validated programs.

Disqualification Procedure (MDCL 080104)

The purpose of this procedure is to standardize the process when a calf in the NHTC or Samson Verified Natural program needs to be disqualified because of exposure to controlled drugs or has become out of control of the program. Out of control of the program is defined as the calf leaving the control of the supplier's care and the supplier is unsure of the calf's exposure.

Non-Hormone Treated Cattle

- Segregate the calf in a holding pen
- Remove the NHTC tag and retag the calf with an Age and Source PCT, if desired
- Write down the PCT number and denote on the inventory records, Hormone Treated
- Keep the calf segregated through tagging or physical separation from NHT cattle and maintain current location in the records until final disposition
- The calf remains eligible for age and source premium markets
- Notify the Samson office of the PCT number and status

Samson Verified Natural Cattle

- Segregate the calf in a holding pen
- If treated with non-hormone controlled drugs, place a hospital tag in the opposite ear of the PCT or remove and retag the calf with a NHTC PCT. Write down the PCT number and denote on the inventory records, Treated
- If hormone treated or has become out of control of the program, Remove the NHTC tag and retag the calf with an Age and Source PCT, if desired. Write down the PCT number and denote on the inventory records, Hormone Treated
- Keep the calf segregated through tagging or physical separation from compliant cattle and maintain current location in the records until final disposition
- The calf remains eligible for NHTC (if treated with non-hormone drugs), age and source premium markets
- Notify the Samson office of the PCT number and status



Receiving Inspection Procedure & Checklist for Samson PVP Enrolled

Cattle (MDCL 230108)

1. Obtain affidavit from the shipping supplier.
2. Unload trucks. Check cattle as they are unloaded to be sure they have a Samson PCT. If the tag is missing, segregate the calf into a holding pen until its status is determined. Maintain segregation of all the cattle until individual receiving inspection is performed.
3. If any ear tags are missing, check the truck for the missing tag(s). Match up any secondary identification with the cattle missing the Samson PCT. If positive ID cannot be established, the calf will be disqualified from the Samson PVP. Notify shipper of discounts to be applied if any.
4. Scan cattle for any unusual appearances with consideration to age, condition, and frame size. Note tag numbers of suspect calves for closer examination at the time of next handling.
5. At the time of next handling, verify ID's with the ID's on the supplier manifest.
6. Turn in completed work sheets to the main office and Samson, LLC for review and filing.

Date Received: _____ Time: _____ AM PM

Received From: _____

Truck Company: _____

Received Shipping Papers: Yes No Cattle Condition: _____

Tags Missing: _____

Truck ID: _____ Head Received: _____

Truck ID: _____ Head Received: _____

Truck ID: _____ Head Received: _____

Truck ID: _____ Head Received: _____

Total Head Received: _____

Receiving Location: _____ Affidavit Number: _____

Receiving Yard Man: _____ Date: _____

Signature: _____ Assigned Lot Number: _____

Samson PVP Shipper's Procedure and Checklist (MDCL 080630)

3-7 days prior to shipment

1. Notify the Samson office the cattle group shipping and shipment date.
2. Provide Samson with any re-tag information.
3. Samson will e-mail or fax you the paperwork to be signed at shipment time.

At shipment:

1. Inspect cattle for tags. If tag is missing – follow retagging procedures
2. Enter the number of cattle shipped on each load on the Producer Affidavit
3. Sign and date the Producer Affidavit
4. Have each truck driver review, sign and date the special instructions to driver
5. Sign the special instructions to driver
6. Send a copy of the Producer Affidavit, Shipping Manifest, and Special Instructions to the Driver with each truck.
7. Obtain and send with the truck any Packer Forms (JEV10, JEV3 or Passports).

After shipment:

1. *****IMPORTANT***** Keep the original shipping documents including the Affidavits (with head counts on each affidavit), Tag Manifest and Truck Driver's signatures in the shipping manifest folder
 2. Fax or mail a copy of the signed Shipping Affidavit and Special Instructions to the Driver documents to the Samson office (Only send the shipping manifest if there are changes from the original)
 3. File and retain all documents for three years.
-

Sample Producer Shipping Affidavit (MDCL 240911)



Samson, LLC PVP

MDCL 240715

Producer Shipping Affidavit

PVP Approval No.: PV5007HTA
Date of Shipment: 2007-07-30
Harvest Date (if applicable): 2007-07-31

Affidavit Number: 565

Program Eligibility: *Check the appropriate program*

- Cattle Meet the Ranch of Origin Requirements (Source)
 - Program tagged at the ranch of origin.
- Cattle Meet the Date of Birth Requirements (Age)
- Cattle Meet the Domestic Hormone-Free Requirements (DHF)
- Cattle Meet EV Program Requirements for the EU (NHTC Approval #NH5306NNA)
- Cattle Meet the Requirements to be classified as Samson Verified Natural
- Cattle Meet the Vet Quality Assurance Requirements
 - Plus the Mineral Feeding Requirement
- Animals Meet the Requirements of the Livestock Feeding Claim Audit
 - Program for EU High Quality Beef or Bison
 - Beef or Bison as defined by QAD 1040 Procedure, Sec. 7.2.1 Quota A
 - Beef as defined by QAD 1040 Procedure, Sec. 7.2.2 Quota B
 - Sec. 7.3 Never Fed Beta Agonists Claim
 - Direct Fed Microbial used during the last 100 days on feed
- Cattle Meet the Requirements of Not Been Fed with Prohibited Animal Protein Post-weaning
 - Meets the Requirements of the EV Program for Saudi Arabia
- Cattle Meet the Lifetime Grass Fed Requirements
- Cattle Meet the Non-GMO Certified Requirements



<http://processverified.usda.gov/>

Total Number of Animals Shipped on this load: _____
Total Number of Animals on Manifest: 161

Genotype: Unknown: 100%

Country of Origin (Born): SD USA Country of Origin (Raised): NE USA

Ranch(es) of Origin: 1) Aughenbaugh Ranch

is the supplier of the identified animals and have directly controlled or taken full responsibility for relevant practices applied in their handling. I do affirm that the animals covered by this certificate have not had their PVP tags altered while under my control.

Name:
Company:
Address:
City / State / Zip: ,
Phone:
Fax:
Cell:

Birth date of oldest calf on the manifest:
2006-02-27

Age in Months 17 & Days 4
on 2007-07-31

Group IDs: pen56, sam706

Sub-Group IDs: ..

Transfer to: Company: Greater Omaha Packing
Address: 3001 L St
City / State / Zip: Omaha, NE 68107
Fax: _____ Phone: 402-731-1700

I certify that all statements made herein are true.

SIGNATURE: _____
Date: _____

Printed Name and Title: _____

Samson PVP Shipping Manifest – Affidavit #0001sample (MDCL 080104)

Date: _____

Directions: List animals to be included on load, including all required information. Attach this sheet to affidavit and include with paperwork to go with shipment. File one copy in the main office.

	Samson #	Ranch ID	Program	Birth Date	Sex	Ranch Origin	Notes
1)							
2)							
3)							
4)							
5)							
6)							
7)							
8)							
9)							
10)							
11)							
12)							
13)							
14)							
15)							
16)							
17)							
18)							
19)							
20)							
21)							
22)							
23)							
24)							
25)							
26)							
27)							
28)							
29)							
30)							
31)							
32)							
33)							
34)							
35)							
36)							
37)							
38)							
39)							
40)							
41)							

SPECIAL INSTRUCTIONS TO DRIVER (MDCL 080630)

For Affidavit Number _____

If cattle must be unloaded in transit, ensure cattle are not commingled with non-Samson PVP cattle. Contact the shipper's main office if cattle will be delayed for more than 8 hours, to make arrangements for feed and water.

Present affidavits and manifest to proper personnel upon arrival at the destination. Do not unload cattle at destination unless the management is aware of the type of cattle being unloaded and has a pen prepared for the PVP program cattle.

I have read the above instructions and agree to comply:

Truck Number	DRIVERS SIGNATURE	DATE
--------------	-------------------	------

Truck Number	DRIVERS SIGNATURE	DATE
--------------	-------------------	------

Truck Number	DRIVERS SIGNATURE	DATE
--------------	-------------------	------

Truck Number	DRIVERS SIGNATURE	DATE
--------------	-------------------	------

Truck Number	DRIVERS SIGNATURE	DATE
--------------	-------------------	------

Truck Number	DRIVERS SIGNATURE	DATE
--------------	-------------------	------

Truck Number	DRIVERS SIGNATURE	DATE
--------------	-------------------	------

Truck Number	DRIVERS SIGNATURE	DATE
--------------	-------------------	------

The load accompanied by AFFIDAVIT # _____ has been properly prepared for shipment and meets all USDA and Samson LLC PVP requirements.

Samson PVP approved supplier

Zero Tolerance Policy (MDCL 150725)

The Samson PVP has a zero tolerance for non-conforming cattle. The purpose for this is to assure our customers that 100% of the cattle meet the requirements of source, age, hormone-free or Samson Verified Natural status. This process verified program has developed the identification and documentation procedures to trace all cattle to their original location. Any willful, inappropriate action not only affects the offending supplier but also the integrity of the Samson PVP and all the suppliers, customers and end-users of the program. Should it be discovered that any supplier is willfully negligent or fraudulent, that supplier will be removed immediately from the approved supplier list and if appropriate, reported to the USDA for further action.

Clean-out procedures for Feeding Equipment (MDCL 150725)

1. Record date, feeds used and person responsible for clean-out
2. Feed Mixers
 - a. Empty feed mixer of its contents
 - b. Mix 500 pounds of a wet feed (Gluten or silage) with 500 pounds of coarse ground dry feed (hay) in the mixer for 3 minutes and fully empty the mixer prior to loading the feed for the program cattle

OR

Sequence feed mixer loads to provide at least one load containing no controlled ingredients between a controlled ingredient load and the load of feed designated for program cattle.

1. Record the order of the load sequences, the pens fed and the rations they contained.

Truck Cleaning Affidavit for Feed Deliveries (MDCL 080728)

Shipper: _____

Origination (City, State): _____

Destination (Supplier Name): _____

This supplier destination is verified for: NHTC ____ **Samson Verified Natural** ____

Trucking/Shipping Firm: _____

Date Loaded: _____

Date Delivered: _____

Product Delivered: _____

____ This shipper only carries the above product.

This semi-trailer/container's last load transported,

- Feed that did not contain any controlled drugs.
- Feed that contained controlled drugs.

If the previous load contained a controlled product, then the truck was (circle all that apply)

- Swept / air blown / flushed / washed prior to loading of hormone free or Samson Verified Natural products.

I hereby certify that above equipment was cleaned thoroughly using the method indicated to keep the integrity of the product intact.

Date: _____

Signed: _____

Title: _____

(Owner, Truck Driver, etc.)

This form must accompany Bill of Lading to: _____

Inventory Control Procedure (MDCL 070601)

The purpose of the inventory control procedure is to provide an auditable trail for verifying the current inventory of controlled products.

Starting Inventory – The beginning inventory of the controlled product at the start of the inventory control period.

Receipts – Controlled product inventory acquired during the performance of this PVP.
Supporting evidence for documenting receipts include purchase invoices.

Uses – Controlled product inventory used during the performance of this PVP.
Supporting evidence for documenting uses include treatment sheets, processing sheets, feed sheets or sales invoices.

Ending Inventory – The ending inventory of the controlled product at a designated date.
The Ending Inventory can then be compared to the physical inventory for reconciliation.

Example:

Synovex

Date	Action	Receipt	Use	Ending Inventory
1-31-07	Beginning Inv.			100
2-15-07	Processing		50	50
2-16-07	Purchase	100		150
2-28-07	Inventory check			150

Back Verification Procedure: Age and Source Only (MDCL 080315)

All cattle that are received without PVP shipping documentation will be considered to be Back-Verified and must go through the BV procedure.

Conditions for BV

Cattle must be received directly from the Ranch of Origin and comply with all program requirements.

Or

The cattle must have a unique tamper-evident tag applied at the ranch of origin, controlled by a third party and comply with all program requirements.

Or

Cattle are approved under another USDA PVP or QSA program.

1. Using BV prior to arrival of the cattle
 - a. Fill out the top portion of the Back-Verification Form.
 - b. Submit to the Samson office for supplier follow-up.
 - i. If the supplier is approved, PCT's will be issued for application on arrival of the cattle.
 1. After tagging the cattle submit the completed BV Form with necessary documentation.
 - ii. If the supplier is denied, the feedyard requesting acceptance will be notified.
 - c. Cattle will receive final approval after receipt of records from the ranch supplier.
2. Using BV after arrival of the cattle
 - a. Fill out the entire BV Form
 - b. Submit the BV Form with the supporting documentation to the Samson office for supplier follow-up.
 - i. If the supplier is approved, PCT's will be issued for application (must be within two weeks of arrival of the cattle).
 - ii. If the supplier is denied, the feedyard requesting acceptance will be notified.
 - c. Cattle will receive final approval after receipt of records from the ranch supplier.

Sample Feed Record MDCL 060601

Sample Feed Record

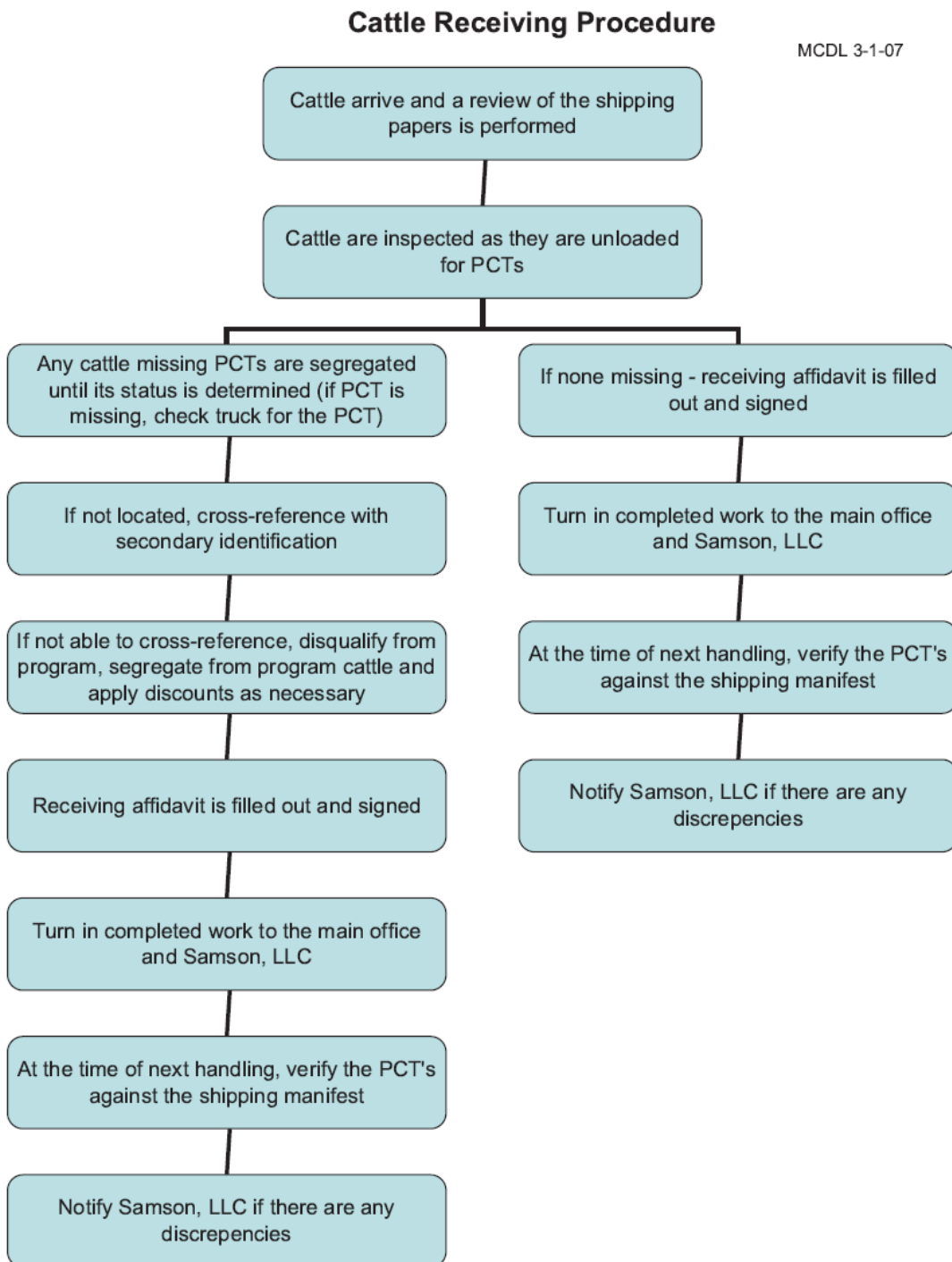
MCDL 6-1-06

IN DATE	02/11/06					LOT NUMBER	602			
OUT DATE						HEAD	107			
IN WT.	812					SEX	S			
OUT WT.										
						DATE	DATE COMPLETED			
						PROCESSING				
DAY	DATE	RATION	BUNK SCORE	LBS. LEFT	DESIRED AMOUNT	DELVRD AM	DELVRD PM	TOTAL CONS.	PEN SCORE	DAILY CONS.
1	02/11/06	41	0	0	1086	1200		1200		11.21
2	02/12/06	51	0	0	1347	2400		2400		22.43
3	02/13/06	51	0	0	1607	2900		2900		27.10
4	02/14/06	51	0	0	1911	2900		2700		25.23
5	02/15/06	51	3	200	1911	2500		2700		25.23
6	02/16/06	51	2	0	2600	2600		2600		24.30
7	02/17/06	51	1	0	2600	2600		2600		24.30
8	02/18/06	51	0	0	2800	2800		2800		26.17
9	02/19/06	51	0	0	3200	3200		3200		29.91
10	02/20/06	51	0	0	3200	3200		3200		29.91
11	02/21/06	51	0	0	3400	3400		3400		31.78
12	02/22/06	51	0	0	3400	3400		3400		31.78
13	02/23/06	51	0	0	3400	3400		3400		31.78
14	02/24/06	51	1	0	3400	3400		3400		31.78
15	02/25/06	51	1	0	3400	3400		3400		31.78
16	02/26/06	51	0	0	3500	3500		3500		32.71
17	02/27/06	62	0	0	3500	3500		3500		32.71
18	02/28/06	62	1	0	3500	3500		3500		32.71
19	03/01/06	62	1	0	3500	3500		3450		32.24
20	03/02/06	62	3	50	3450	3400		3450		32.24
21	03/03/06	62	1	0	3450	3450		3450		32.24
22	03/04/06	62	1	0	3450	3450		3450		32.24
23	03/05/06	62	1	0	3450	3450		3450		32.24
24	03/06/06	62	0	0	3500	3500		3500		32.71
25	03/07/06	62	0	0	3500	3500		3500		32.71
26	03/08/06	62	0	0	3500	3500		3500		32.71
27	03/09/06	62	0	0	3500	3500		3500		32.71
28	03/10/06	62	0	0	3500	3500		3500		32.71
29	03/11/06	62	0	0	3500	3500		3500		32.71
30	03/12/06	62	0	0	3600	3600		3600		33.64
31	03/13/06	63	0	0	3600	3600		3600		33.64
32	03/14/06	63	0	0	3700	3700		3700		34.58
33	03/15/06	63	1	0	3700	3700		3700		34.58
34	03/16/06	63	1	0	3700	3700		3700		34.58
35	03/17/06	63	0	0	3800	3800		3800		35.51
36	03/18/06	63	1	0	3800	3800		3800		35.51
37	03/19/06	63	1	0	3800	3800		3800		35.51
38	03/20/06	63	1	0	3800	3800		3800		35.51
39	03/21/06	63	1	0	3800	3800		3800		35.51
40	03/22/06	63	0	0	3900	3900		3900		36.45
41	03/23/06	63	0	0	3900	3900		3900		36.45
42	03/24/06	63	0	0	3900	3900		3900		36.45
43	03/25/06	63	0	0	4000	4000		4000		37.38
44	03/26/06	64	0	0	4000	4000		4000		37.38
45	03/27/06	64	0	0	4000	4000		4000		37.38

B

Cattle Receiving Procedure MDCL 070301

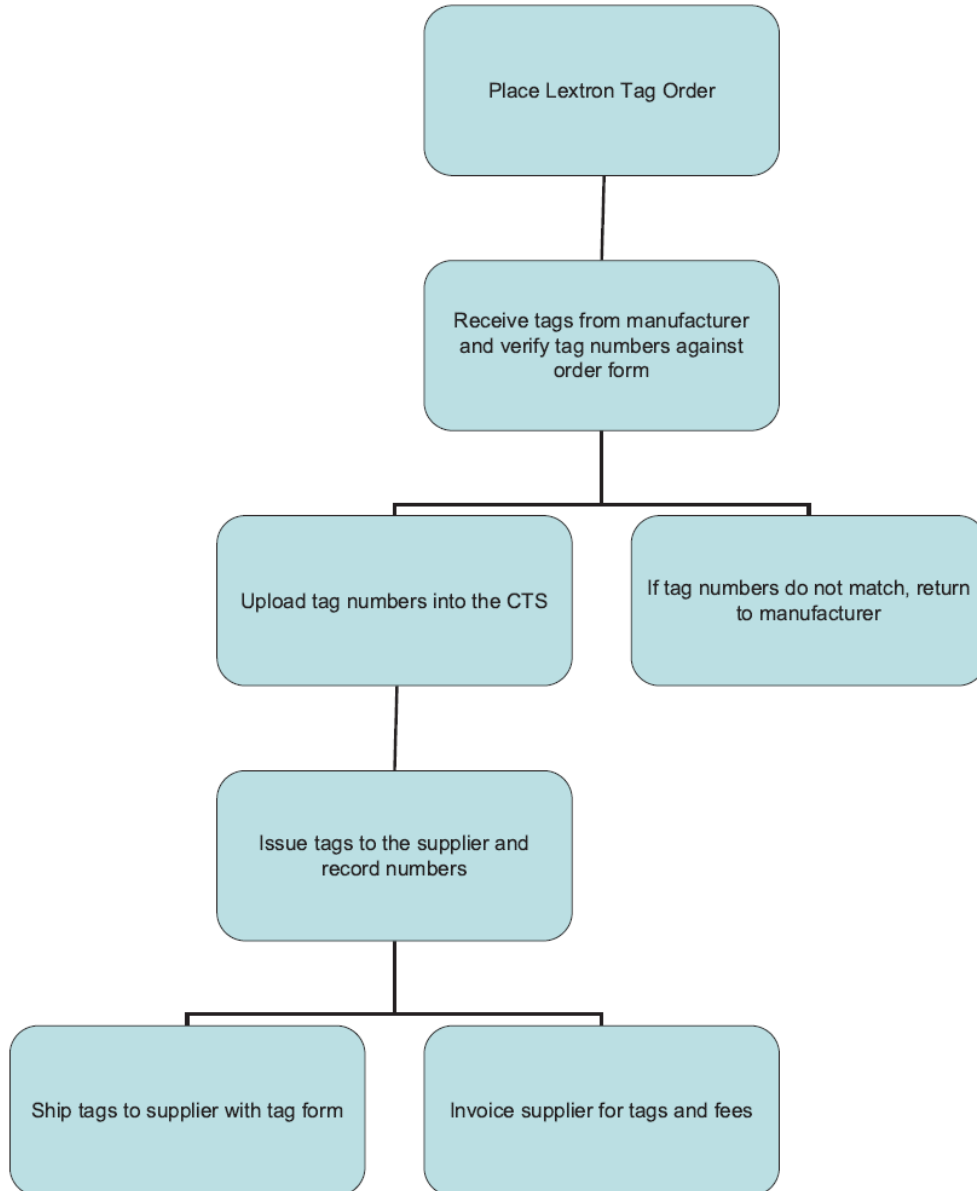
MDCL 3-1-07



C

Program Compliant Tag- Samson, LLC Tag Receiving Procedure (MDCL 070601)

Program Compliant Tag - Samson, LLC Receiving Procedure MCDL 6-1-07

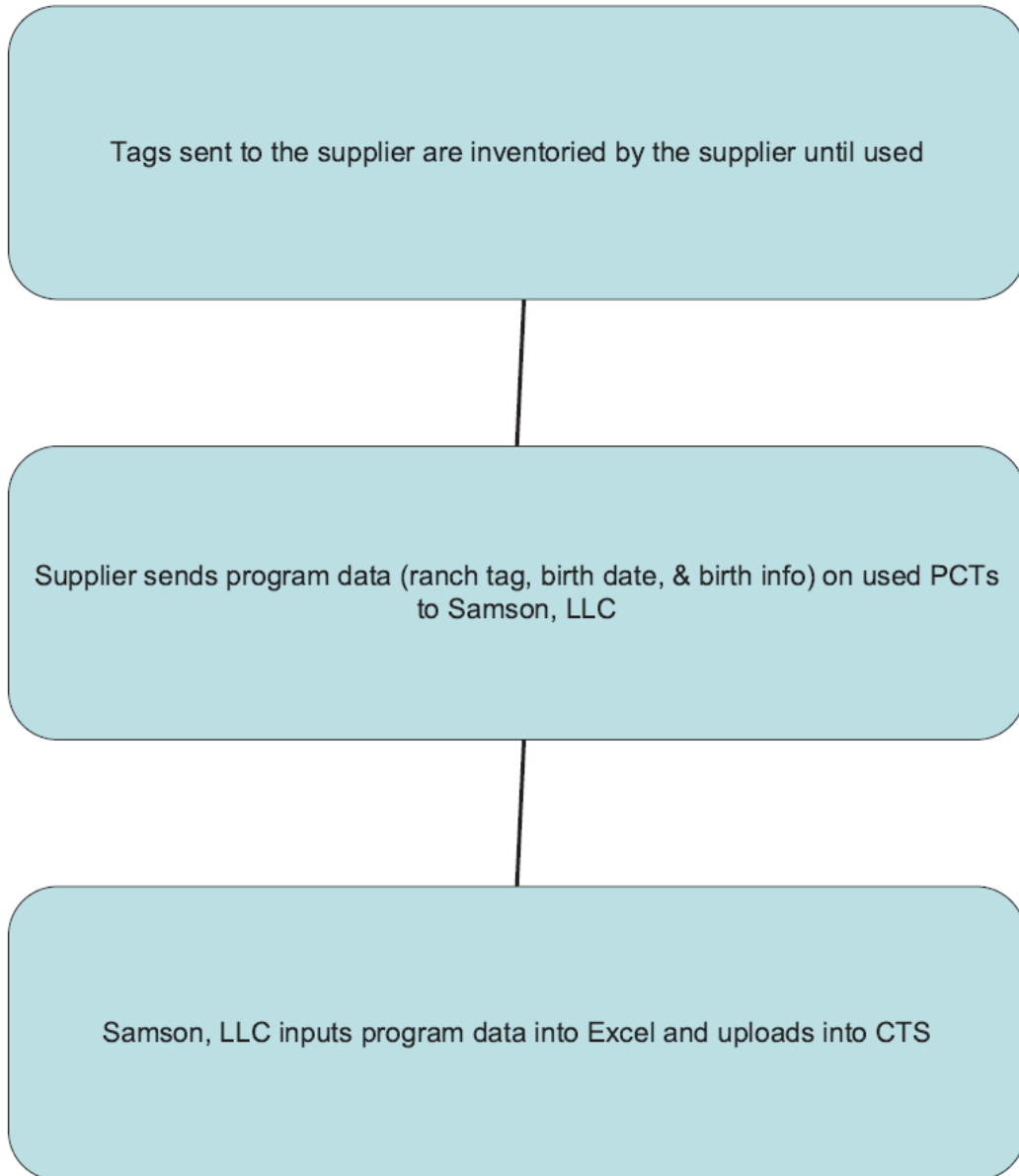


D

Program Compliant Tag- Supplier Receiving Procedure (MDCL 070301)

Program Compliant Tag - Supplier Receiving Procedure

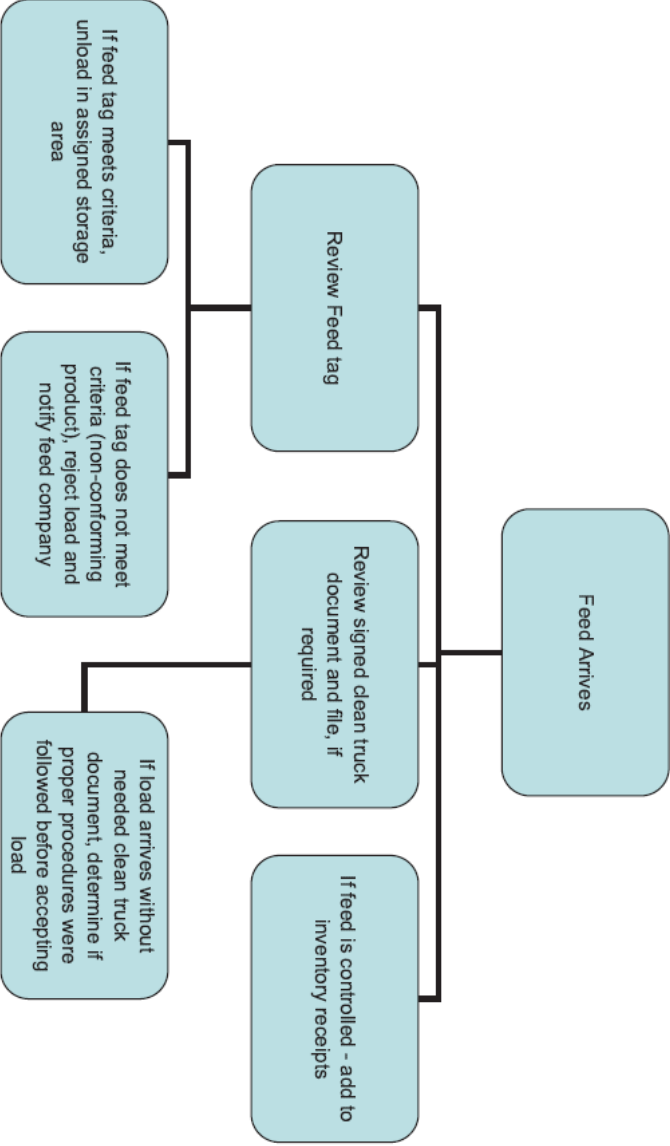
MCDL 3-1-07



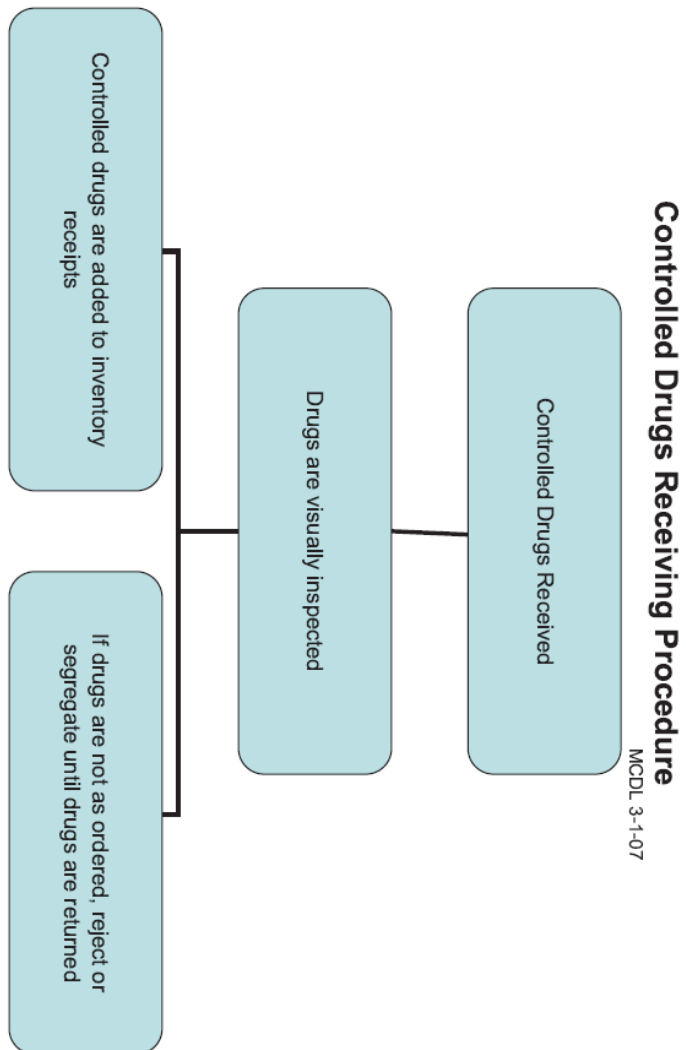
E

Feed Receiving Procedure

MDCL 3-1-07



Controlled Drugs Receiving Procedure (MDCL 070301)




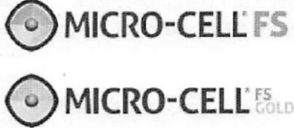

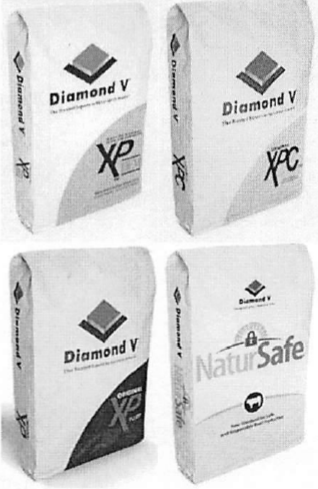
Samson Verified Natural Criteria (MDCL 230623)

Samson Verified Natural Criteria		
1-No Antibiotics	2-No Growth Promotants	3-No Animal By-Products
<p>No antibiotics can be administered whether through feed, water, or by injection, from birth to slaughter.</p> <p>This includes low-level (sub-therapeutic) or therapeutic level doses, sulfonamides, and ionophores.</p> <p>However, coccidiostats for parasite control may be used. See Note 1 below.</p> <p><i>If animals require antibiotics for treatment of illness, they must be treated and removed from the program.</i></p>	<p>The administration of growth hormones, including natural hormones, synthetic hormones, estrus suppressants, beta agonists, or other synthetic growth promotants is prohibited from birth to slaughter.</p>	<p>Mammalian, fish and avian by- products are not allowed in the feed.</p> <p>These by-products include animal waste (e.g. poultry litter) and by-products (e.g. products derived from the slaughter/harvest process including meat and fat).</p> <p>Vitamin and mineral supplementation are permissible. See Notes 2 below.</p> <p>***Milk Replacers, including those containing animal fat or protein, may be used as a milk supplement until weaning.</p>
<p><i>Note 1:</i> Coccidiostats such as Deccox or Amprolium may be used for parasite control</p>		
<p><i>Note 2:</i> Vitamins and minerals, including salt, are not considered feed additives for this program and are not subject to the Antibiotic free requirements.</p>		

Tyson Approved Direct-Fed Microbial List (MDCL 180731)



Approved Direct-Fed Microbial	Manufacturer	Label Example(s)																				
<p>Bovamine® Defend™</p> <p>Premix (not frozen) 2 gram/hd./day feeding rate product so the 50# bag has 11,340 feeding days, example 500 hd. for 22 days.</p> <p>Stabilized feed manufacturing product</p> <table border="1" data-bbox="630 1288 842 1615"> <thead> <tr> <th>Feeding Rate lb/hd/d</th> <th>lb/ton</th> </tr> </thead> <tbody> <tr><td>0.25</td><td>2.00</td></tr> <tr><td>0.33</td><td>1.52</td></tr> <tr><td>0.50</td><td>1.00</td></tr> <tr><td>0.67</td><td>0.75</td></tr> <tr><td>0.75</td><td>0.67</td></tr> <tr><td>1.0</td><td>0.50</td></tr> <tr><td>1.25</td><td>0.40</td></tr> <tr><td>1.50</td><td>0.33</td></tr> <tr><td>2.0</td><td>0.25</td></tr> </tbody> </table>	Feeding Rate lb/hd/d	lb/ton	0.25	2.00	0.33	1.52	0.50	1.00	0.67	0.75	0.75	0.67	1.0	0.50	1.25	0.40	1.50	0.33	2.0	0.25	<p>CHR Hansen*</p> <p>*Please note, the manufacturing company has two similar products – we are approving the Bovamine® Defend™ product (please see label example at side).</p>	 <p>The image shows two product labels for Bovamine Defend. The top label is for '10,000 HEAD DAILY' and the bottom label is for '4000 HEAD/DAY'. Both labels include detailed text about ingredients, usage, and manufacturer information.</p>
Feeding Rate lb/hd/d	lb/ton																					
0.25	2.00																					
0.33	1.52																					
0.50	1.00																					
0.67	0.75																					
0.75	0.67																					
1.0	0.50																					
1.25	0.40																					
1.50	0.33																					
2.0	0.25																					

<p>Microcell FS Microcell Gold FS</p>	<p>Lallemand Animal Nutrition</p>	
<p>MSE</p>	<p>Natur's Way Probiotic</p>	
<p>XP_{DFM} XPC XP NaturSafe</p>	<p>Diamond V</p>	



Verification of Non-Samson Approved Cattle for Program Compliance

(MDCL 150724)

Date: _____

Received From: _____

Date of Shipment: _____

Contact: _____

Phone: _____

Current Location: _____

Date Received: _____

Contact: _____

Phone: _____

Number of Cattle Received: _____ steers _____ heifers

Submit the following with this document:

Shipping Affidavit / Truck Card

Tag Manifest

For future reference:

Pen #: _____ Lot #: _____

Traceability of Identification (check all that apply)

Ranch tag was not removed from the cattle

Lot tag was applied upon arrival and cross-referenced to the PCT

Cattle have remained segregated from other sources of cattle

Cattle were received directly from the listed location on the Shipping Affidavit

Cattle were previously approved by another USDA PVP/QSA Program

Name of Provider: _____

Cattle were commingled but can be identified by source

Describe how the cattle are distinguishable:

I attest that _____ has maintained the identity of the cattle and have
(Current Location Name)
removed any cattle that may have questionable origin.

Submitted by: _____
Current Location Representative

Date: _____

Approved by: _____
Samson, LLC

Date: _____

Approved Feed & Feed Ingredient List (Computer Generated)

Approved Drug Listing (Computer Generated)